



# Evaluating Coins

## Coins are evaluated using 4 criteria

www.CongressionalJewelryCoin.com • 1331 Rockville Pike #F, Rockville, MD 20852

### Condition

Refers to the amount of wear on the detail of a coin



G - Good Condition



F - Fine Condition



XF - Very Fine Condition

*The less wear, the higher the value on specific series*

### Scarcity

Some years there were fewer coins and mint marks produced, making them 'better dates'



*Examples of U.S. Mint Marks*



S - San Francisco, CA

D - Denver, CO

P - Philadelphia, PA



O - New Orleans, LA

CC - Carson City, NV

W - West Point, NY

C - Charlotte, NC

### Content

The kind of metal used to make the coin



Copper/Nickel



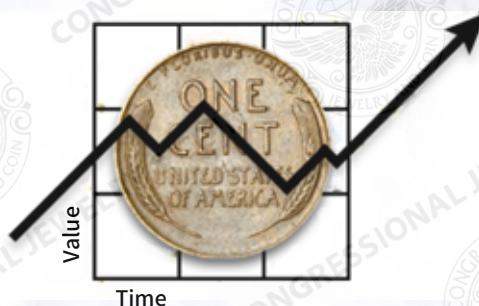
Silver



Gold

### Demand

The current popularity of a particular coin or series



PLEASE sort your coins as described above before bringing them in for evaluation & never clean your coins.



# How to Identify & Sort Your Coins

## Indian Head Cents 1859-1909



Better Dates: 1859-1879, 1908-S, 1909-S  
(Sort by decade)

## Lincoln Wheat Cents 1909-1958



Better Dates: Any 1909, 1910-1915-S, 1914-D, 1922, 1924-D, 1931  
(Sort by decade)

## Liberty 'U' Nickels 1883-1912



Better Dates: 1885, 1886, 1912-S  
(Sort by decade)

## Buffalo Nickels 1913-1938



Better Dates: 1913-S, 1914-D, 1921-S, 1937-D 3 Leg  
(Sort by date versus no date)

## Jefferson Nickels 1938 to Date



Better Dates: 1939-D, 1950-D Silver: 1942-1945 with large mint mark over Monticello (All other dates spend)

## Barber Dimes 1892-1916



Better Dates: 1892-S, 1894-O, 1895-O, 1895-S, 1896-O, 1896-S, 1897-O, 1901-S, 1903-S, 1913-S

## Mercury Dimes 1916-1945



Better Dates: 1916-D, 1921, 1921-D  
(Others worth at least their silver content))

## Silver Roosevelt Dimes 1946-1964



1946-1964 are worth their silver content, 1965-Date is just pocket change (unless in U.S. Mint packaging)

## Barber Quarters 1892-1916



Better Dates: 1896-S, 1901-S, 1913-S  
(Other dates worth at least their silver value)

## Standing Liberty Quarters 1916-1930



Better Dates: 1916-1924, 1927-D&S  
(Others worth at least their silver content))

## Silver Washington Quarters 1932-1964



Better Dates: 1932-D, 1932-S  
(1932-1964 are worth at least their silver content))

PLEASE sort your coins as described above before bringing them in for evaluation & never clean your coins.



# How to Identify & Sort Your Coins

## Barber Half Dollars 1892-1915



Better Dates: 1892-O, 1893-S, 1897-O, 1897-S, 1913, 1914, 1915  
(Other dates are worth at least their silver value)

## Walking Liberty Half Dollars 1916-1947



Better Dates: 1916, 1921, 1938-D  
(Other dates are worth at least their silver value)

## Franklin Half Dollars 1948-1963



Worth at least their silver value  
(Uncirculated condition are worth more)

## Silver Kennedy Half Dollars 1964-1970



1964 - 90% Silver, 1965-1970 40% Silver  
1971 Date can be spent as regular change (unless in U.S. Mint packaging)

## Morgan Silver Dollars 1878-1921



Better Dates: Any 'CC' mint marks, 1893, 1894 & 1895  
All should be professionally evaluated

## Peace Silver Dollars 1921-1935



Better Dates: 1921, 1928  
All should be professionally evaluated

## Eisenhower Dollars 1971-1978



Brown box or Blue envelope 40% silver

## Susan B. Anthony Dollars 1979-1981 & 1999



Better Dates 1981, 1999 - other dates can be spent as change  
(unless in U.S. Mint packaging or original rolls)